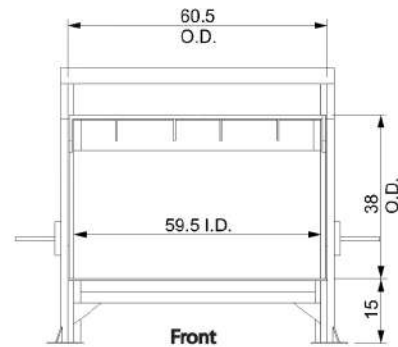
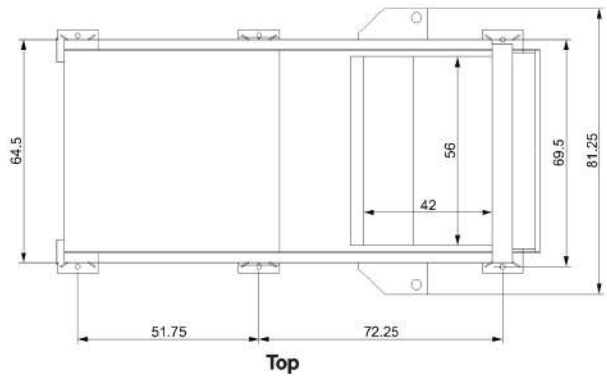
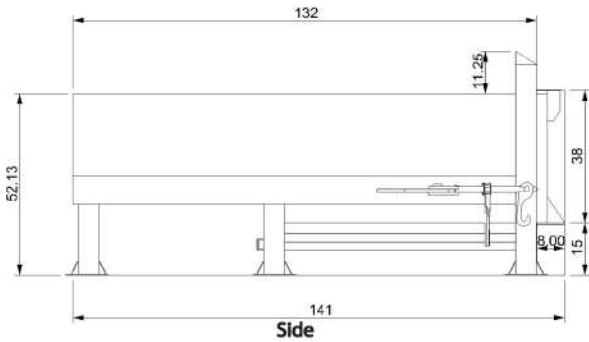




IES SALES & SERVICES LLC
 2340 NW 147TH ST. BAY F3, OPALOCKA, FL 33054
 OFFICE: 1-(305)-687-9400
 FAX: 1-(305)-687-9700
 RECYCLEIES@GMAIL.COM
 WWW.REFUSEWASTEQUIP.COM

**I-PAK IE-300
 STATIONARY COMPACTORS**



Recommended container opening:
 -Height: 44" min
 -Width: 63" min, 68" max

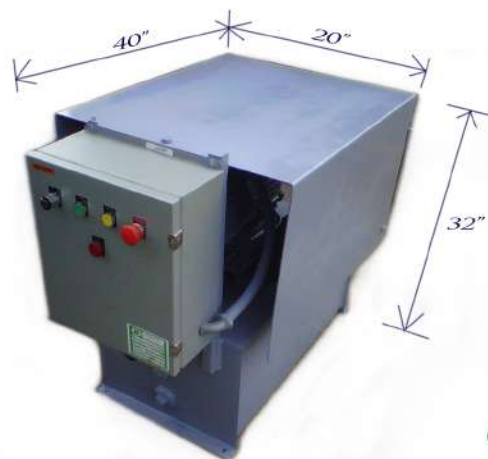
Manufacturer Rating.....	2.45 cubic yard
Vol. Displacement per Hr.	129 cu. yards
Hopper-Clear Top Opening.....	56" x 42"
Hopper Depth.....	36-1/4"
Overall Length.....	141"
Overall Height.....	63-1/8"
Overall Width.....	81-1/4"
Ram Face Size.....	30" x 59-1/8"
Ram Penetration.....	12"
Normal Ram Force.....	56,548 lbs.
Maximum Ram Force.....	65,030 lbs.

Normal Ram Face Pressure.....	32psi
Maximum Ram Face Pressure.....	37psi
System Pressures.....	Normal 2000psi / Max. 2300psi
Cycle Time.....	64 sec
Cylinder.....	6" Bore x 60" Stroke w/ 3" chrome shaft
Floor.....	3/8" plate
Ram Face.....	3/8" plate
Sides.....	1/4" plate
Top Cover.....	12 gauge
Ram Guide System.....	Abrasive Resistant Steel

Power Pack Unit

Pump.....	12 GPM @ 1800 RPM
Reservoir.....	22 Gal.
Valve.....	Solenoid
Pressure Relief Valve.....	Standard
Full / Jam Light.....	Standard
Oil Sight Gauge.....	Standard
Remote Power Unit.....	Key Operated, Standard
Controls.....	Push Button
Cycle Control.....	Limit Switches
Electric Motor.....	208,230,460 (3 phase)
Motor.....	High Torque Hyd. 10 HP TEFC

Power Unit Weight.....535 lbs. Approx.
 Compactor Weight.....4600 lbs. Approx.



The specification sizes/measurements in this document are not complete or definitive and are subject to change with out notice, all drawings and information contained herein is intellectual and exclusive properties of IES Sales and Services LLC.



© -2011 All Rights Reserved